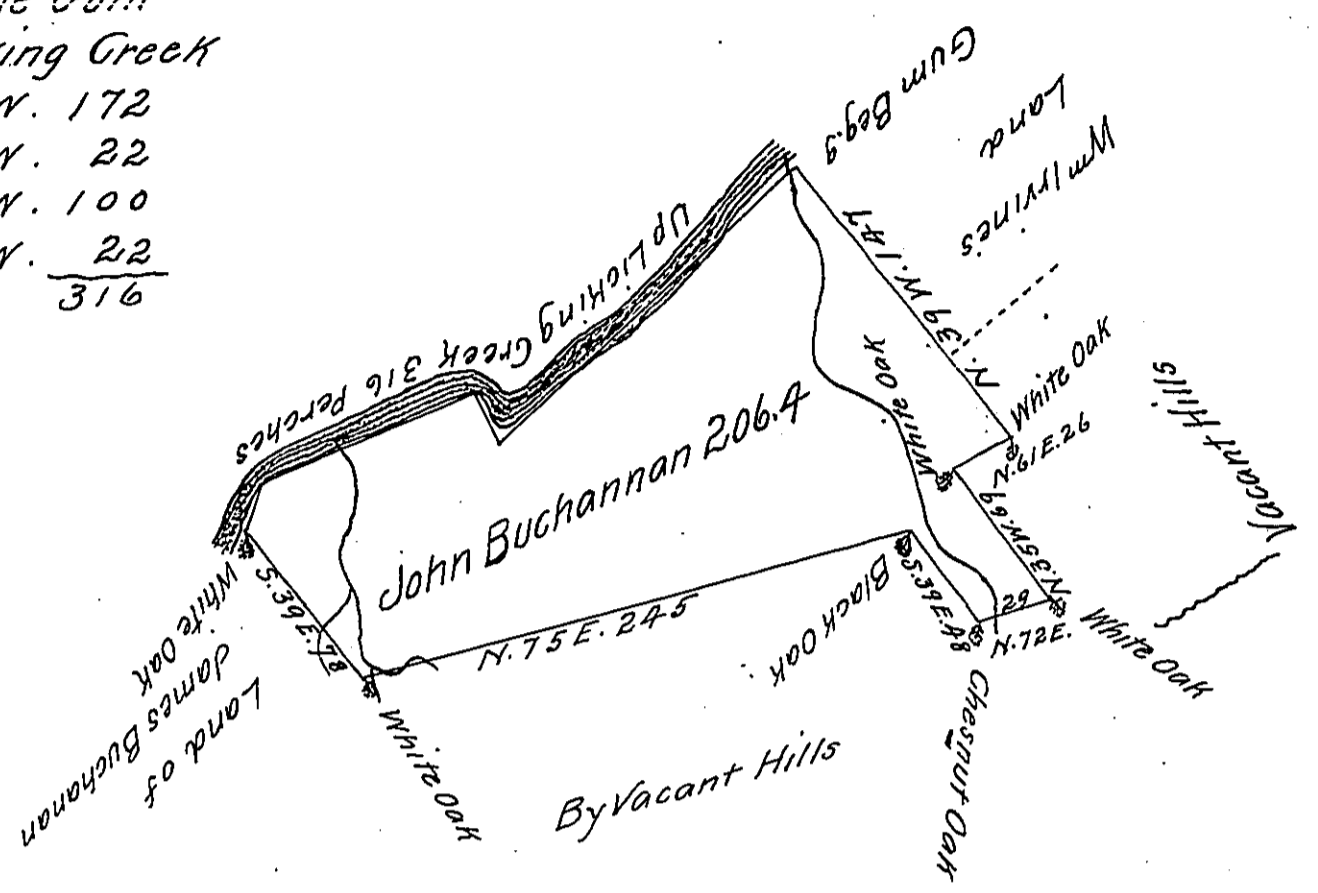


FORM No. 1.

From the Gum
 up Licking Creek
 S. 47. W. 172
 N. 30. W. 22
 S. 67. W. 100
 S. 14. W. 22
316



The Draught of a Tract of Land called _____ Situate on Licking Creek
 in the County of ^{now Mifflin} Cumberland. Containing Two Hundred and Six Acres
 69 Perches with the usual Allow. of Six Acres p Cent for Roads.
 Surveyd the 27th day of April Anno Dom: 1767 In Pursuance of
 an Order of Survey to John Buchannan Bearing Date at Philad^a
 the 14th day of Jan^y Anno Dom: 1767 and numbered 2333.
 To John Lukens S. G. } P Wm Maclay D. S.
 of Pennsylvania }

IN TESTIMONY that the above is a copy of the original remaining on file in
 the Department of Internal Affairs of Pennsylvania, made
 conformably to an Act of Assembly approved the 16th day of
 February, 1833, I have hereunto set my Hand and caused
 the Seal of said Department to be affixed at Harrisburg,
 this Fifteenth day of November 1910

Henry Honck
 Secretary of Internal Affairs.